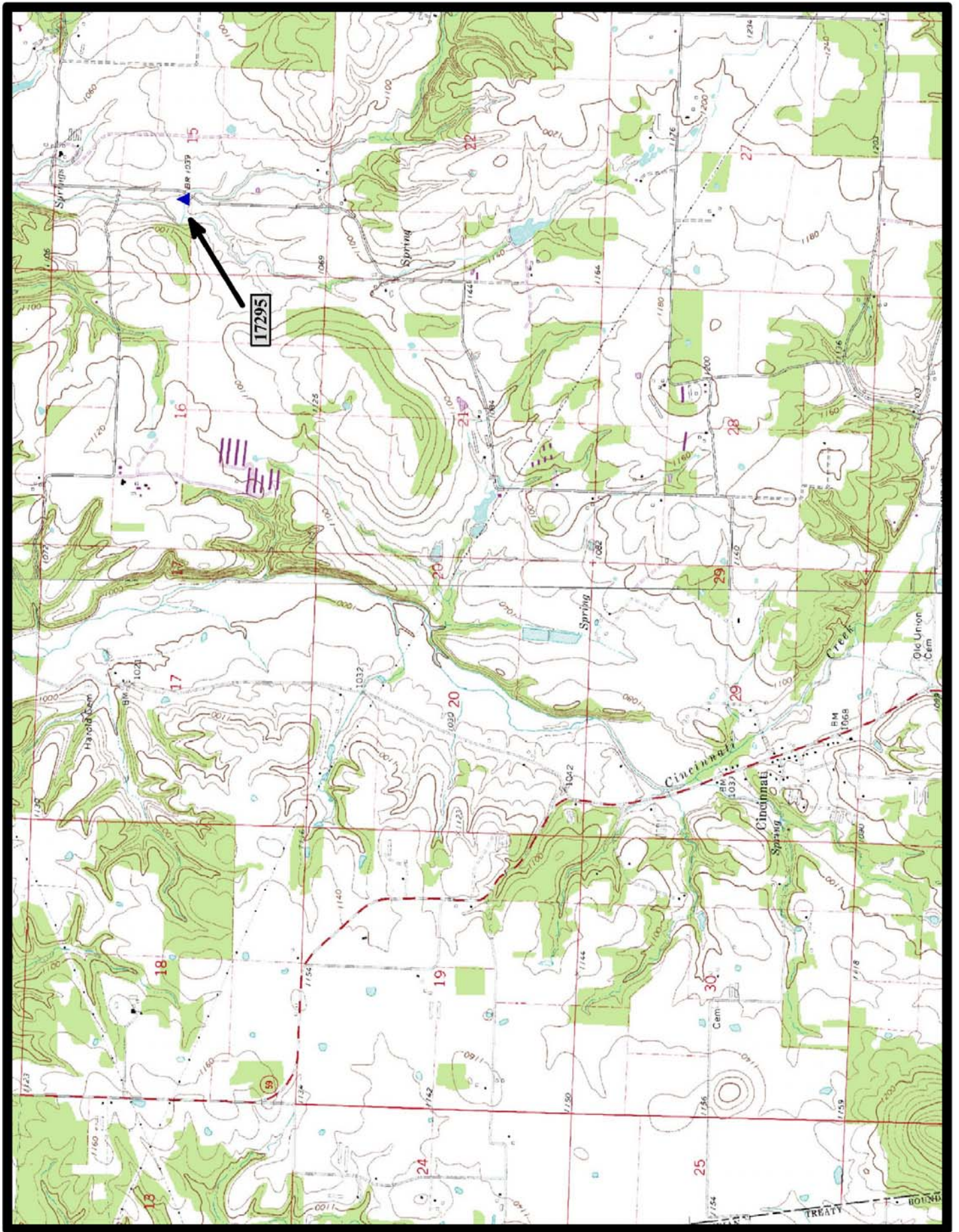




HISTORIC BRIDGE #17295
COUNTY ROAD 6
WASHINGTON COUNTY
WARREN PONY TRUSS
CROSSES - UNNAMED CREEK
DATE OF CONSTRUCTION - 1915
BUILDER - UNKNOWN
HISTORIC BRIDGE INVENTORY DATE - 2005
SHPO NUMBER - WA0802
HAER NUMBER -
DATE LISTED ON NATIONAL REGISTER - 9/24/2004
LAT./LONG. 36:04:08.90, -94:28:30.25

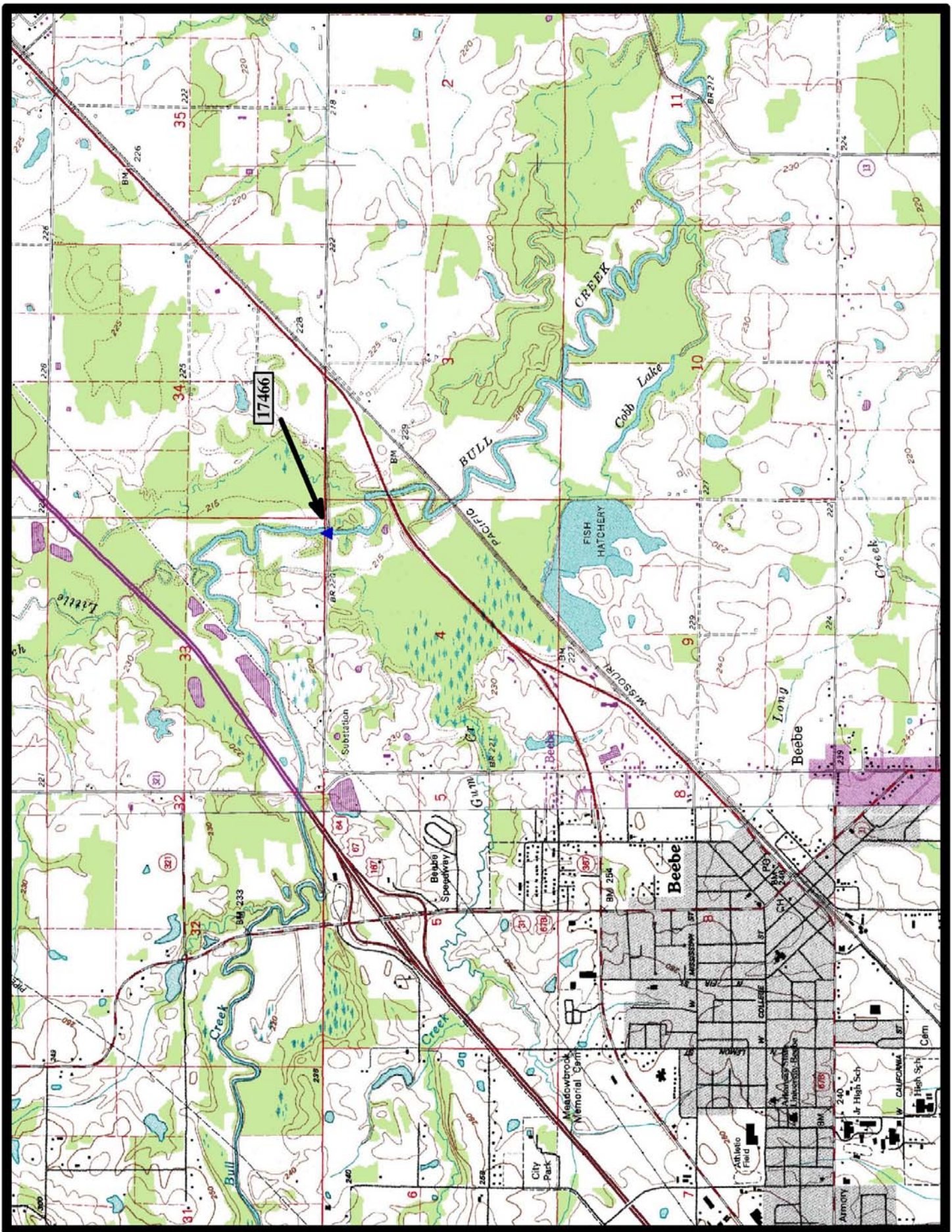


North

Rhea 7.5 min. Quad



HISTORIC BRIDGE #17466
COUNTY ROAD 50
WHITE COUNTY
WARREN PONY TRUSS
CROSSES - BULL CREEK
DATE OF CONSTRUCTION – 1925
BUILDER - UNKNOWN
HISTORIC BRIDGE INVENTORY DATE - 2005
SHPO NUMBER – WH2357
HAER NUMBER -
DATE LISTED ON NATIONAL REGISTER -
LAT./LONG. 35:05:40.80, -91:51:25.30

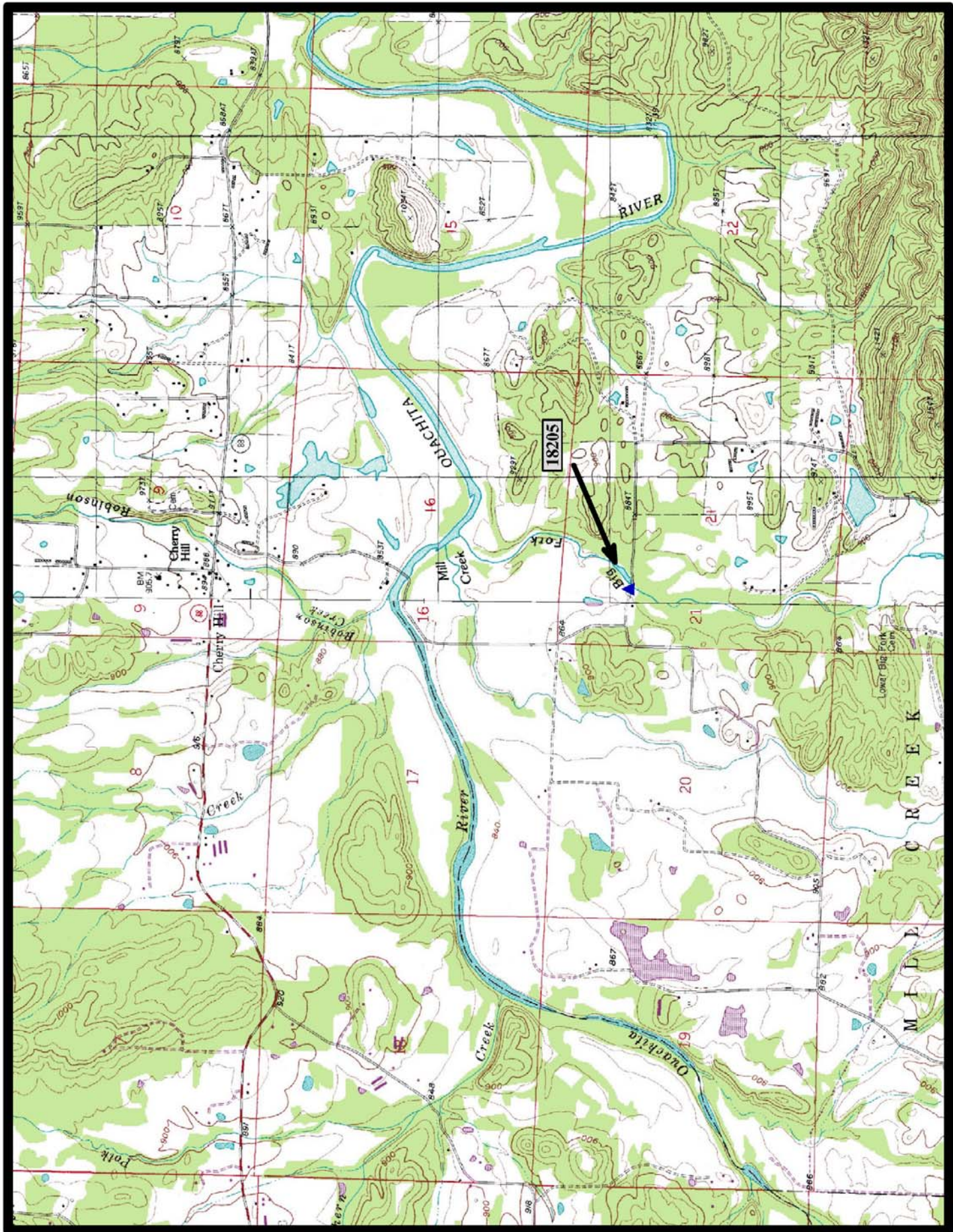


←
North

McRae 7.5 min. Quad



HISTORIC BRIDGE #18205
COUNTY ROAD 67
POLK COUNTY
WARREN PONY TRUSS
CROSSES - BIG FORK CREEK
DATE OF CONSTRUCTION – 1915
BUILDER - UNKNOWN
HISTORIC BRIDGE INVENTORY DATE - 2005
SHPO NUMBER – PL0259
HAER NUMBER -
DATE LISTED ON NATIONAL REGISTER -
LAT./LONG. 34:33:48.26, -93:59:56.69

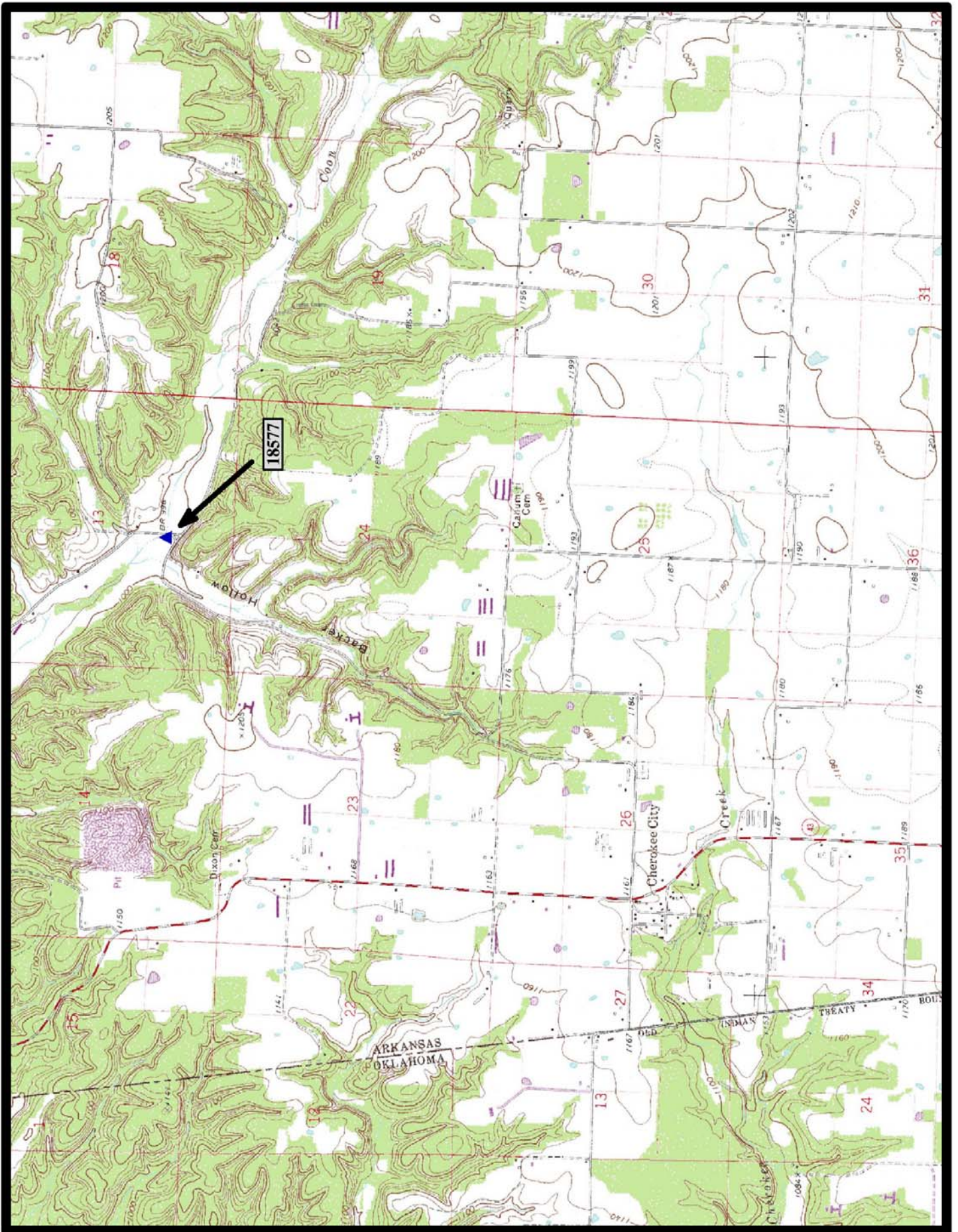


←
North

Pine Ridge 7.5 min. Quad



HISTORIC BRIDGE #18577
COUNTY ROAD 27
BENTON COUNTY
WARREN PONY TRUSS
CROSSES - COON CREEK
DATE OF CONSTRUCTION - 1930
BUILDER - UNKNOWN
HISTORIC BRIDGE INVENTORY DATE - 2005
SHPO NUMBER - BE3602
HAER NUMBER -
DATE LISTED ON NATIONAL REGISTER - 1/24/2007
LAT./LONG. 36:19:223.98, -94:33:14.46

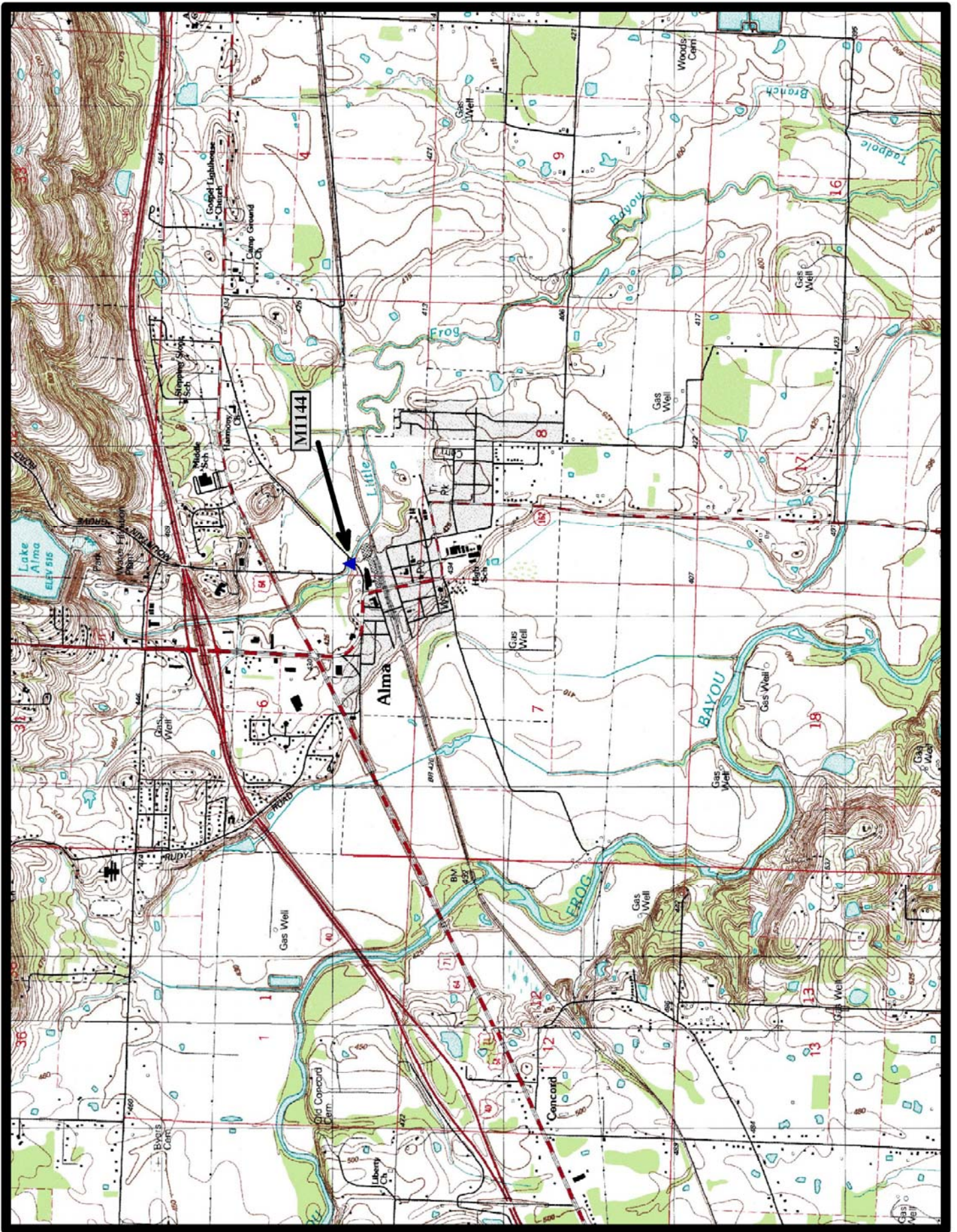


North

Cherokee City 7.5 min. Quad



HISTORIC BRIDGE #M1144
US HIGHWAY 64C
CRAWFORD COUNTY
WARREN PONY TRUSS
CROSSES - LITTLE FROG BAYOU
DATE OF CONSTRUCTION – 1929
BUILDER - UNKNOWN
HISTORIC BRIDGE INVENTORY DATE - 2005
SHPO NUMBER – CW0504
HAER NUMBER -
DATE LISTED ON NATIONAL REGISTER -
LAT./LONG. 35:28:52.41, -94:13:12.40



←
North

Alma 7.5 min. Quad